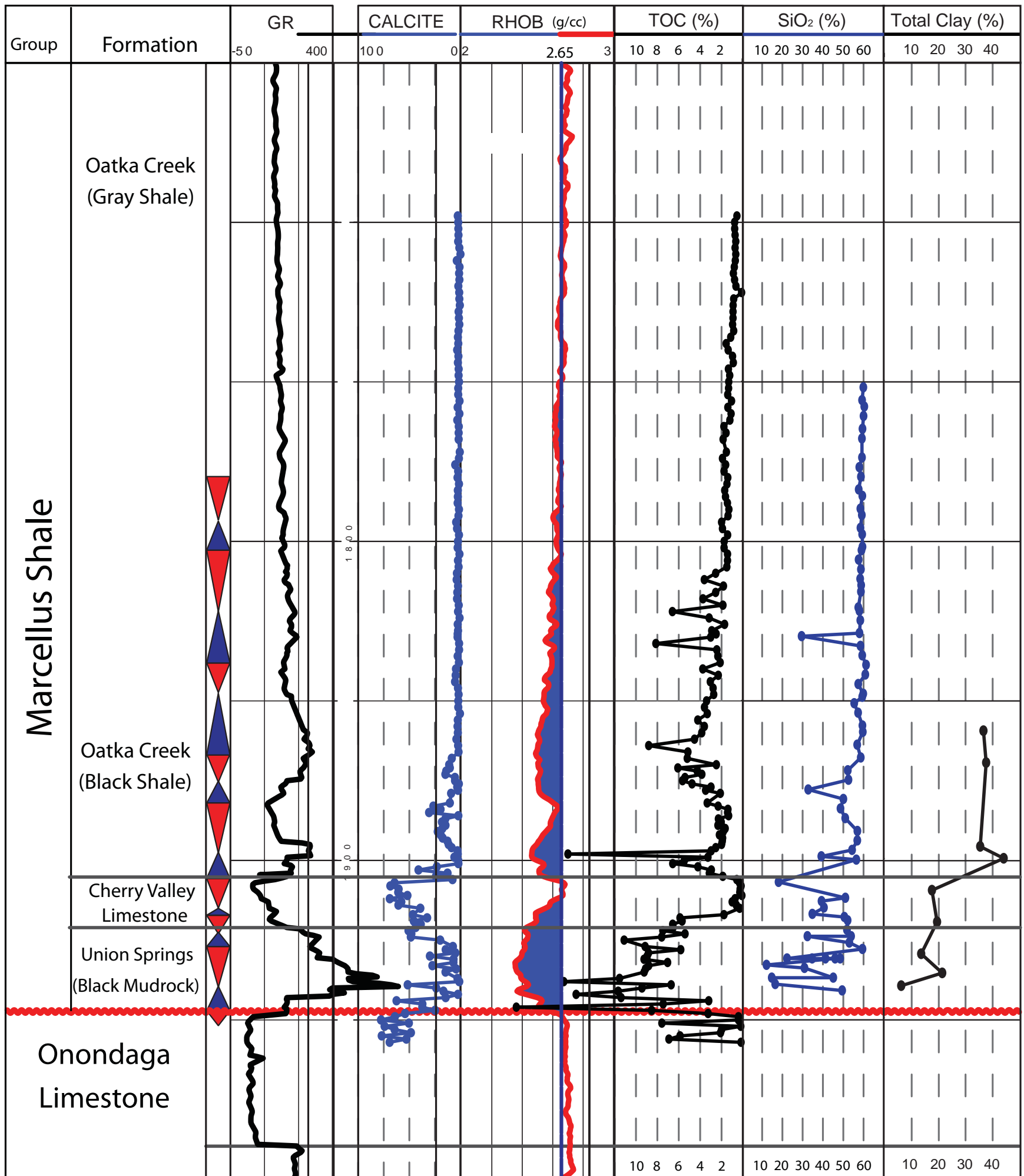


Beaver Meadows #1 Core



Logs from Beaver Meadows # 1 which has a 300 foot core in the Marcellus. Samples were taken every 1-2 feet and analyzed for TOC and carbonate content. Density log matches TOC log very closely with values <2.65 g/cc correlating with TOC>1%. Calcite log matches the gamma ray log in the Union Springs, Cherry Valley and lower carbonate-rich Oatka Creek. Clay and quartz increase upward, highest TOC interval has common interbedded carbonates. Cycles picked with highest TOC at mfs and limestone or lower TOC caps.

